



**Water Engineering in Motion**

[sales@kgnpillinger.com](mailto:sales@kgnpillinger.com)

tel. 0208 681 0097

ProductDataSheet



## Project planning

## 3D CAD & BIM

KGN client projects are developed from planning to implementation via 2D and 3D Computer Aided Design Software (CAD) and supported by Building Information Modelling (BIM) allowing for any interface issues to be identified and resolved in advance of manufacture.

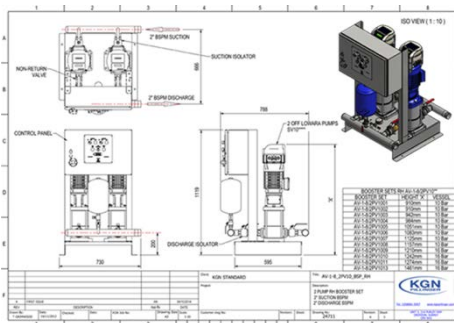
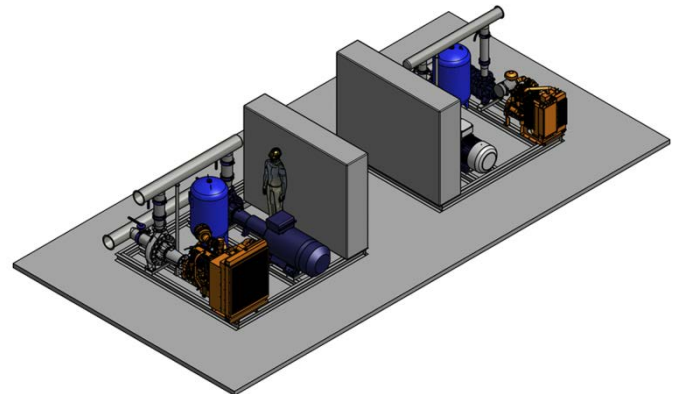
### Description

3D CAD is the use of computer systems to assist in the creation, modification, analysis, or optimisation of a design. CAD software uses graphics showing the overall appearance, dimensions, processes and tolerances of materials used for designed objects and provides the user with a three dimensional multi-axis view.

BIM is a co-ordinated set of processes, supported by technology, that add value by creating, managing and sharing the properties of an asset throughout its lifecycle. BIM incorporates data - physical, commercial, environmental and operational - on every element of a development's design.

### Advantages

- Plan procurement of materials, equipment and manpower
- New and existing assets are integrated seamlessly
- Clear idea of design intent and modification
- Better outcome through collaboration
- Whole life asset management
- Faster project delivery
- Fits first time



### Features

- Optimisation of temporary works designs
- Provides specification of replacement parts
- Real time examination of complex procedures
- Free downloadable Design Review Software available
- Capable of building the project in a virtual environment
- Interactive 3D diagrams show how to dismantle and reassemble equipment items
- Contains product information to assist with commissioning, operation and maintenance



**Please contact our sales team for further information on these and the complete range of KGN Pillinger water boosting equipment, pressurisation units and stainless steel fabrication.**