



Water Engineering in Motion

sales@kgnpillinger.com
tel. 0208 681 0097
ProductDataSheet



Stainless Steel Fabrication

KGN has a progressive investment policy and continue to lead the way with acquisitions of the latest state-of-the-art machinery for the fabrication of stainless steel pipework and sheet metal to specific requirements.

Advantages

- In-house fabrication providing bespoke made-to-order products
- Reduced transport costs minimising carbon footprint
- Shorten production lead times

Machinery

Amada Rotary Index Laser Cutter: Automatically cuts stainless steel tube, angle and box section up to 6m in length and plate up to 3000mm x 1500mm to exact size.

HD Series Amada Press Brake: Delivers 170 tonnes pressure to fold up to 3m lengths of stainless steel plate.

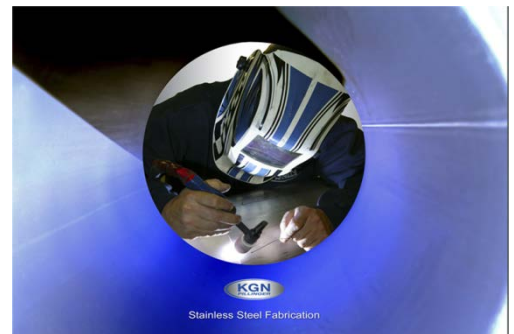
T-DRILL TEC-150: Pulls collars up to 220mm on tube diameter of 600mm.

T-DRILL F-200: Forms flanges on pipe ends up to 220mm diameter and 5mm wall thickness.

Automated Orbital Welder: Enclosed, water cooled and calibrated to weld 15mm - 100mm stainless steel pipe in a continuous process.

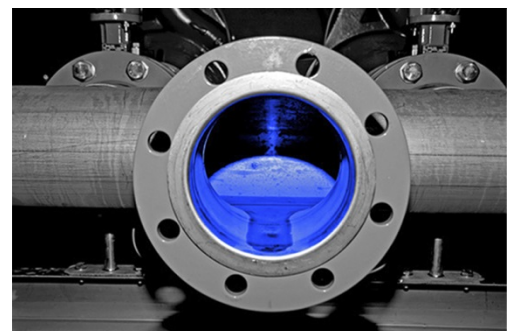
Applications

- | | |
|-------------|---------------|
| • Manifolds | • Dosing Pots |
| • Handrails | • Walkways |
| • Brackets | • Pipework |
| • Guards | • Cladding |
| • Bases | • Railings |
| • Plates | • Tanks |



Features

- 304 and 316L stainless steel as standard
- Controlled environment for quality assurance
- Integrated solutions from design to installation
- Increased longevity, technical superiority and competitive edge
- In-house production eliminates third party supply and transport
- Stainless steel recognised as preferred option for pipe networks



Please contact our sales team for further information on our Stainless Steel Fabrication Services and the complete range of KGN Pillinger water boosting equipment and pressurisation units.